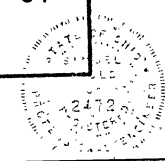


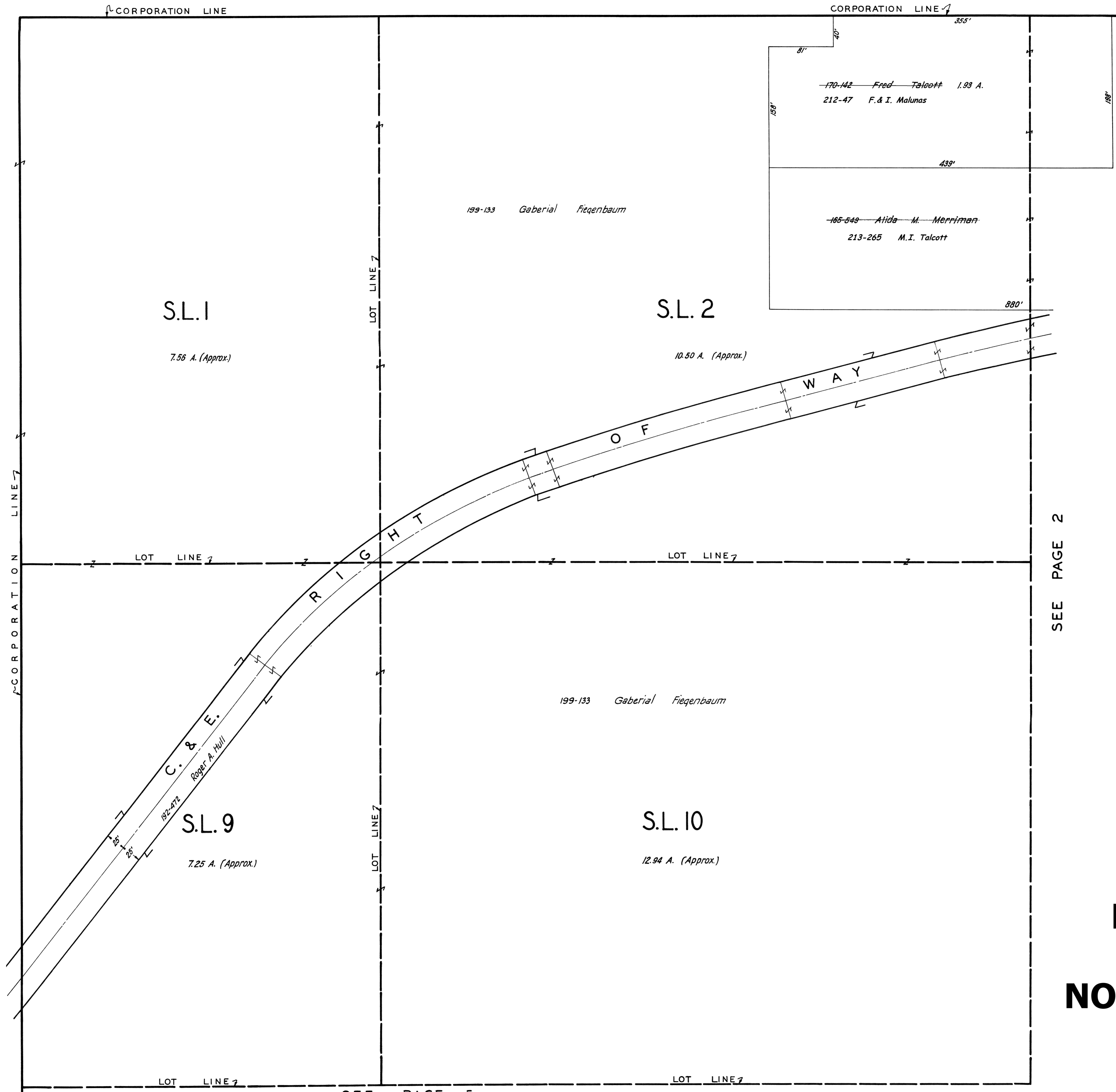
**BURTON  
VIL - INDEX  
NOT TO SCALE  
1944**





BURTON VILL.- GREAT LOT 35

PAGE 1



SEE PAGE 2



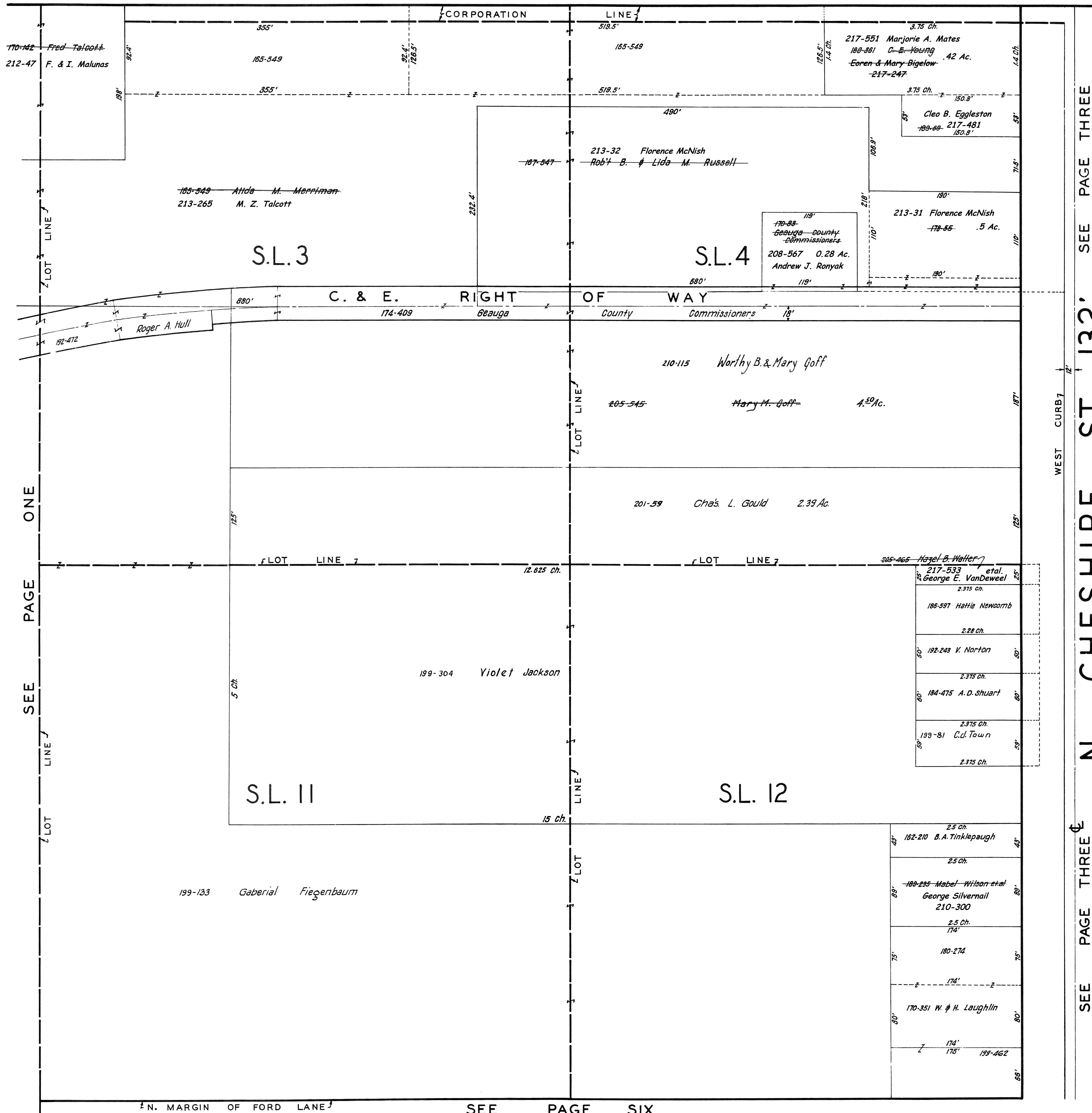
SCALE 1" = 66'

8-8-42  
 JAN. 1, 1944  
 3-1-43  
 2-15-44

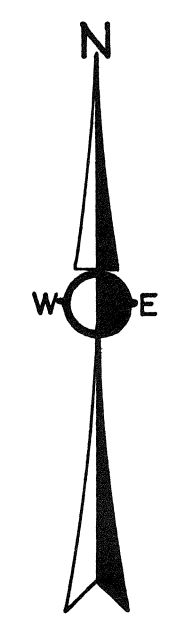
**BURTON  
 VIL - 1  
 NOT TO SCALE  
 1944**

SEE PAGE 5

BURTON VILL.-GREAT LOT 35



SEE PAGE THREE  
 WEST CURB 12'  
**N. CHESHIRE ST. 132'**  
 SEE PAGE THREE



SCALE 1"=66'

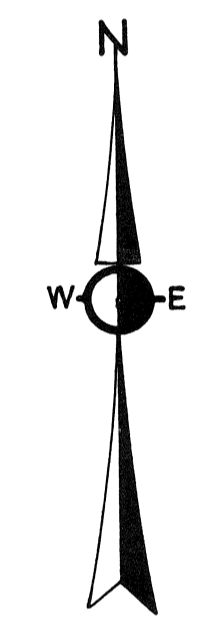
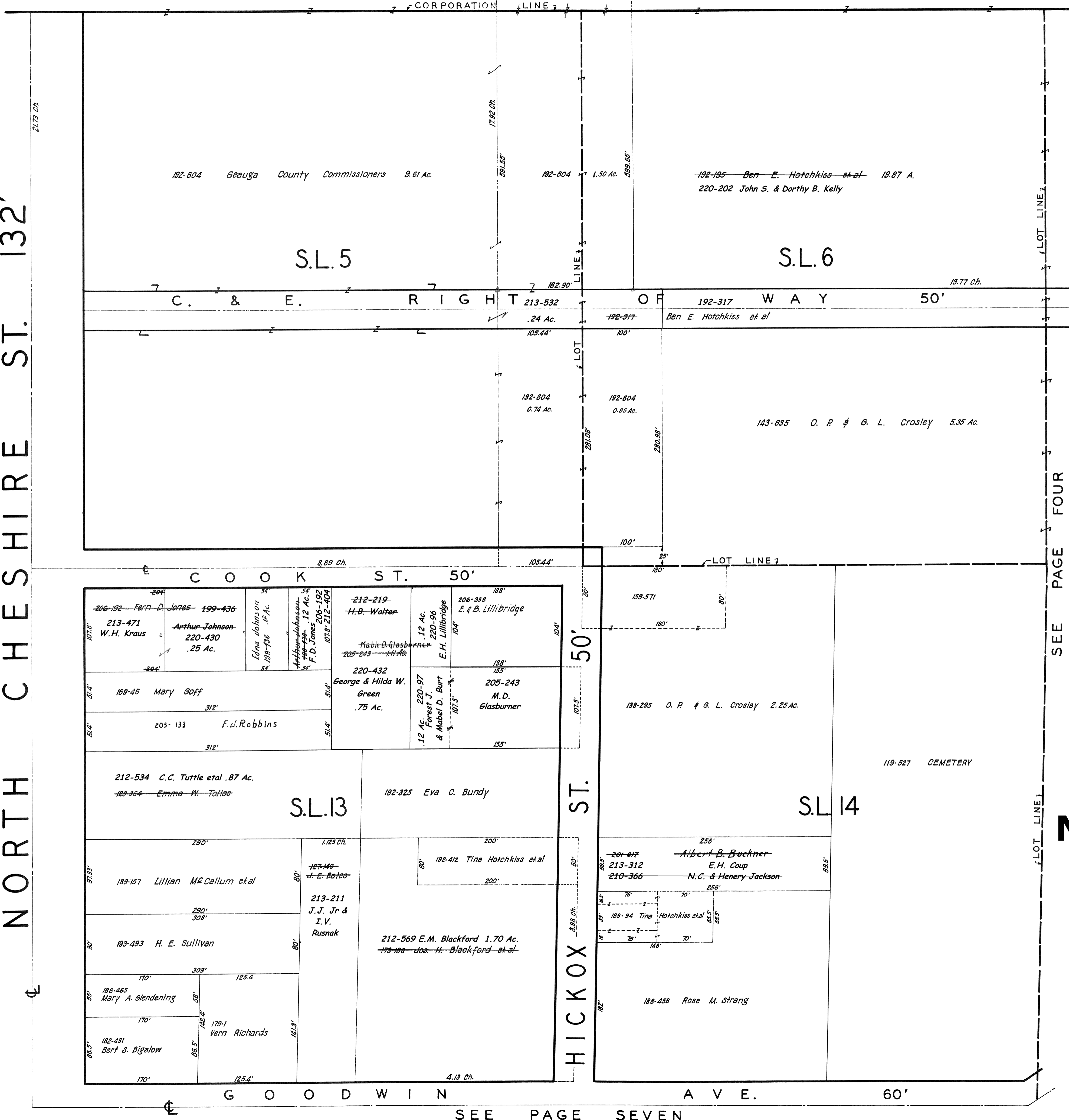
8-8-42  
 JAN. 1, 1941  
 3-1-43  
 2-15-44

**BURTON  
 VIL-2  
 NOT TO SCALE  
 1944**

ONE PAGE SEE LINE

SEE PAGE SIX

SEE PAGE TWO NORTH CHESHIRE ST. 132'

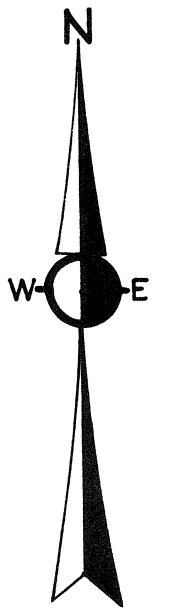
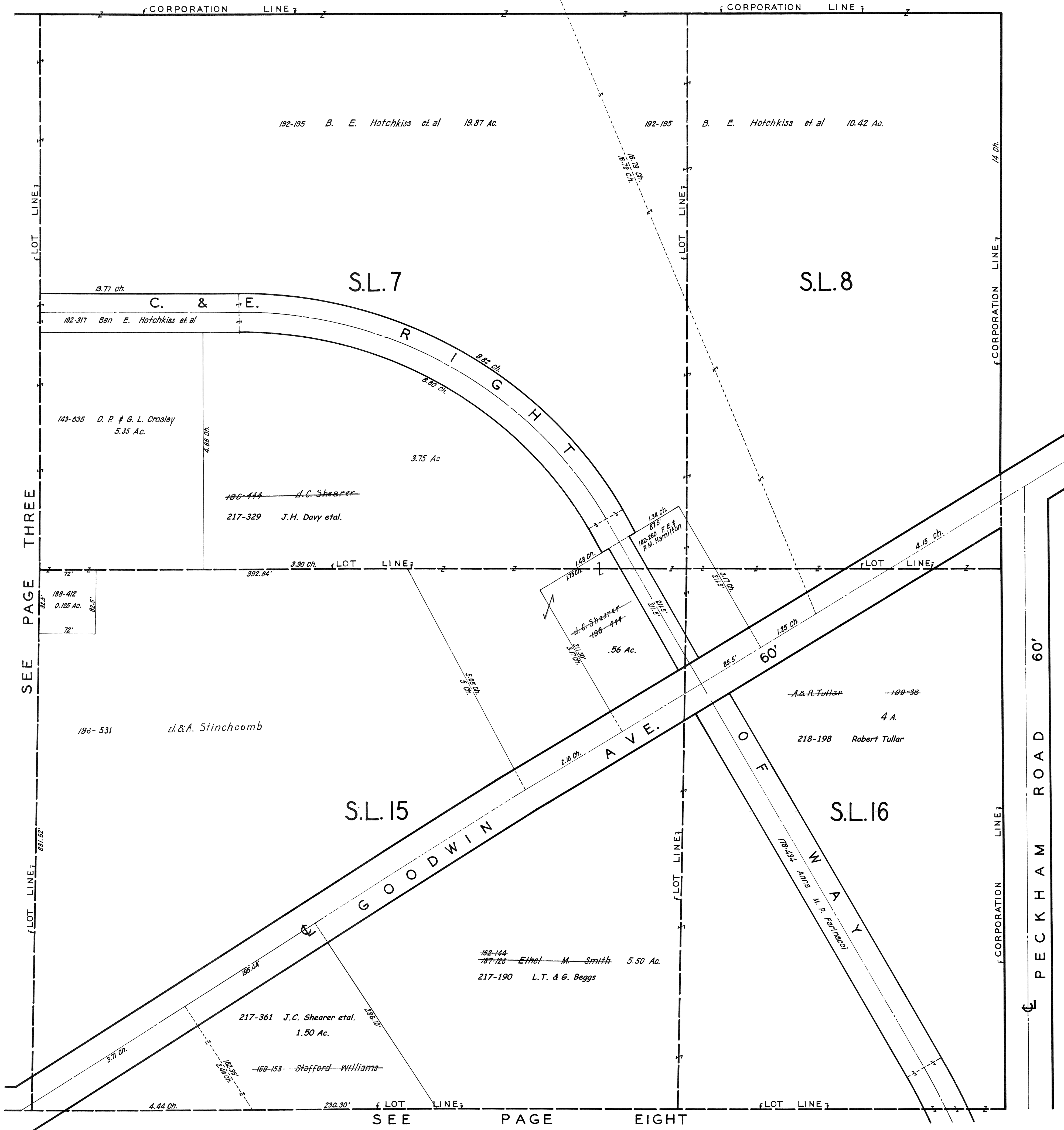


SCALE 1"=66'

~~8-8-42~~  
~~JAN. 1, 1941~~  
~~3-1-43~~  
2-15-44

**BURTON  
VIL - 3  
NOT TO SCALE  
1944**

BURTON VILL.- GREAT LOT 36



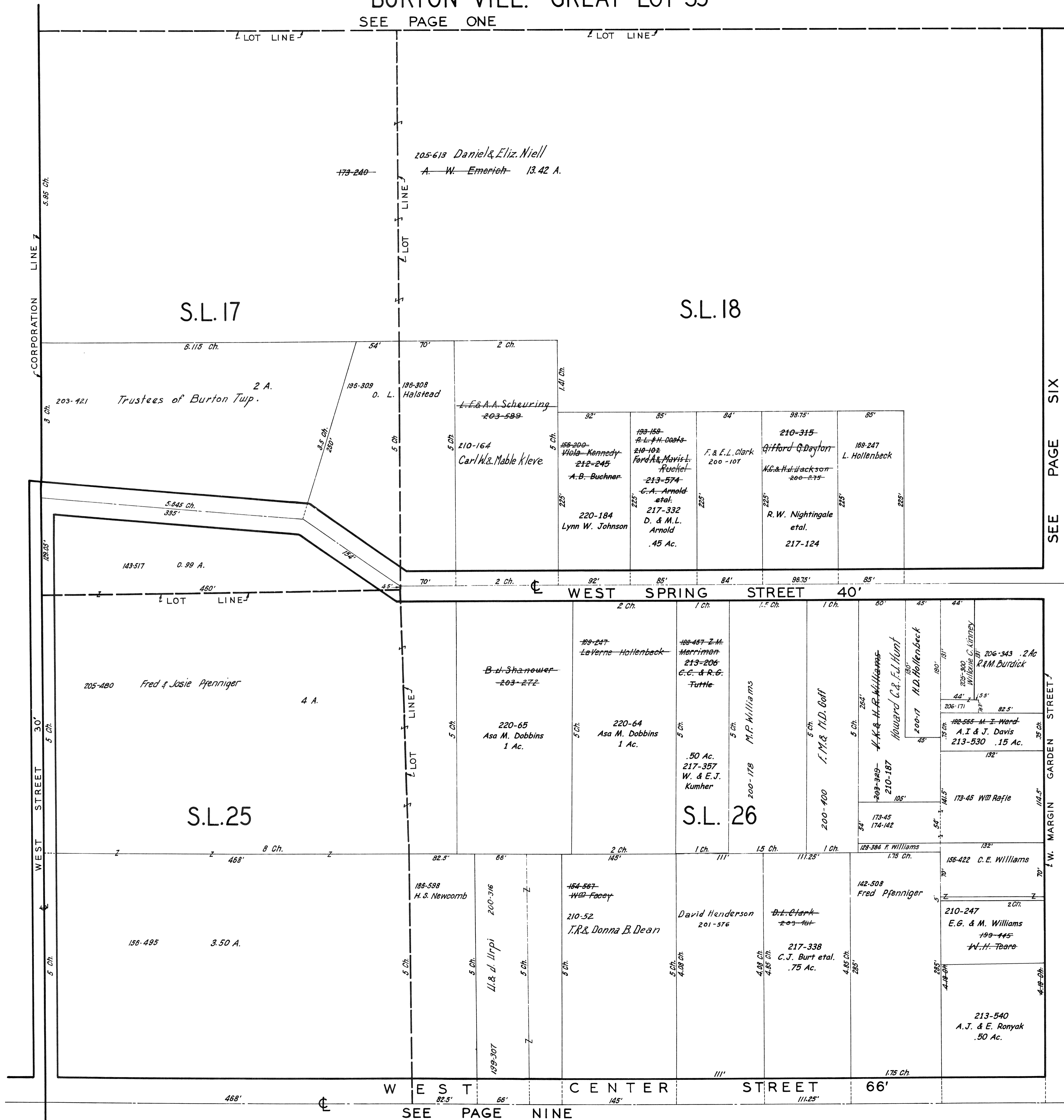
SCALE 1"=66'

~~8-8-42~~  
~~JAN. 1, 1941~~  
~~3-1-43~~  
~~2-15-44~~

**BURTON**  
**VIL - 4**  
**NOT TO SCALE**  
**1944**

BURTON VILL.- GREAT LOT 35

SEE PAGE ONE



SEE PAGE SIX



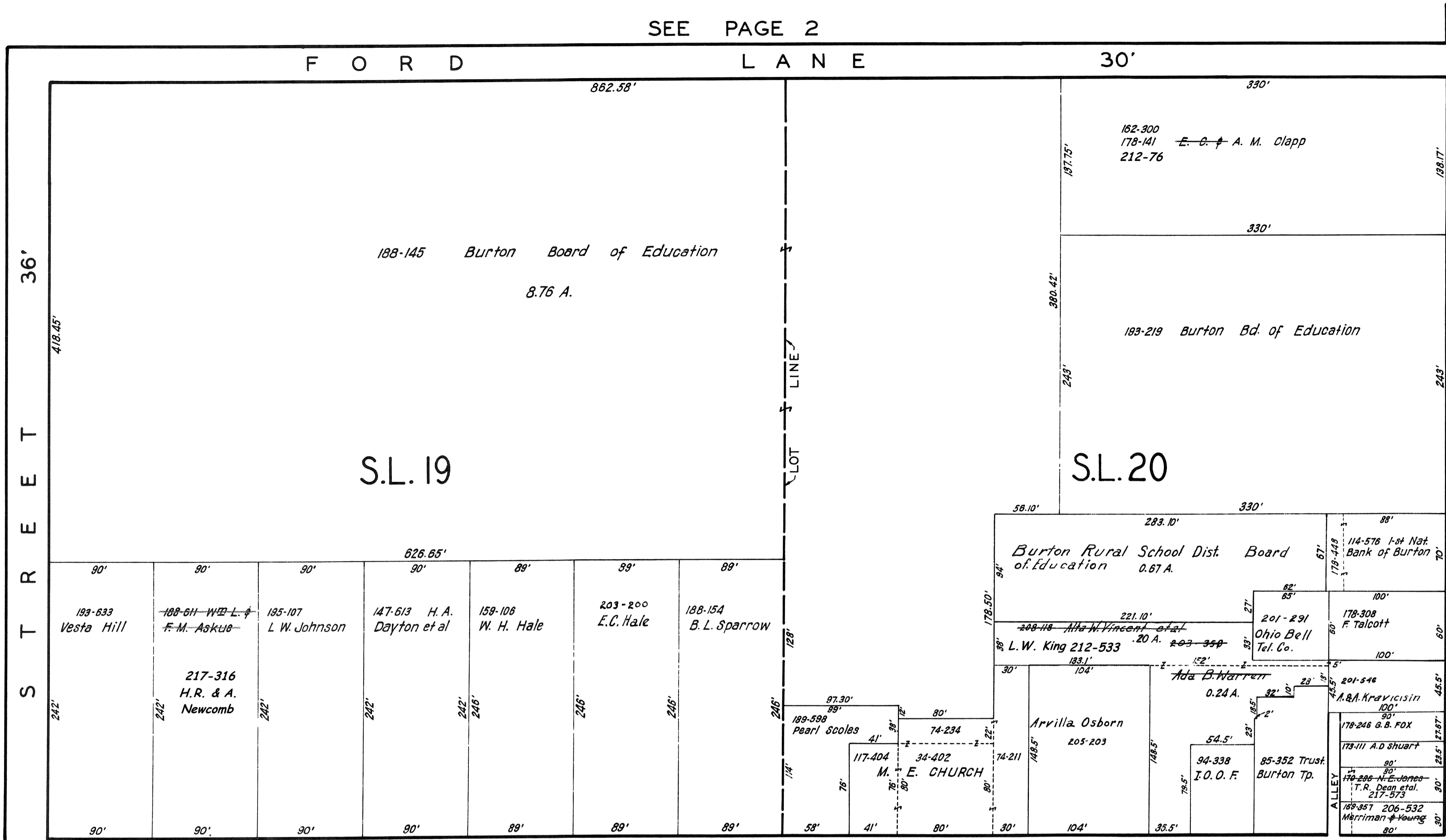
SCALE 1" = 66'

8-8-42  
 JAN. 1, 1941  
 3-1-43  
 2-15-44

**BURTON  
 VIL - 5  
 NOT TO SCALE  
 1944**

SEE PAGE NINE

SEE PAGE 5



N. CHESHIRE ST. 132'

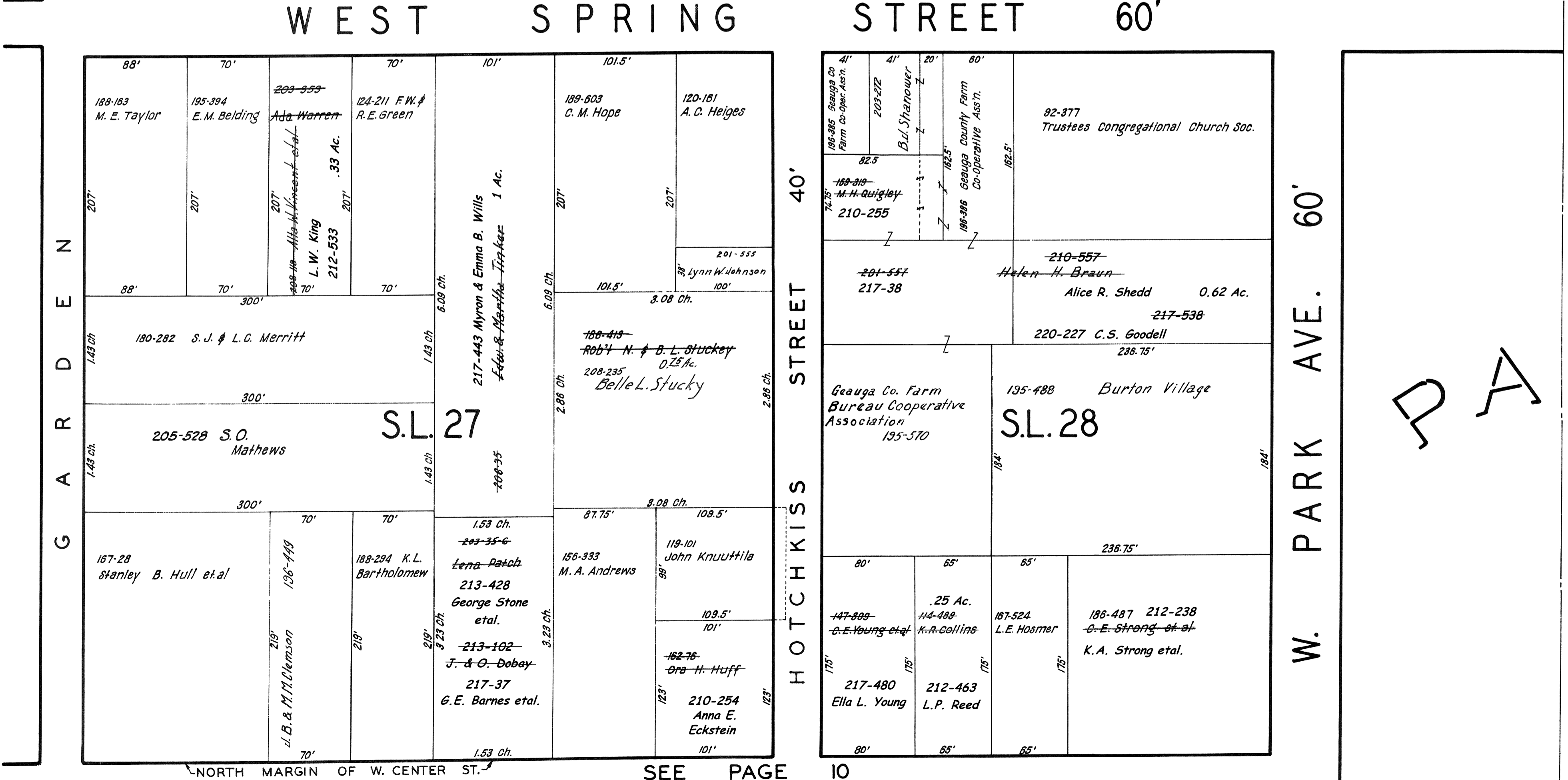
SEE PAGE 7

BURTON VIL - 6 NOT TO SCALE 1944



SCALE 1"=66'

8-8-42 JAN. 1, 1944 3-1-43 2-15-44

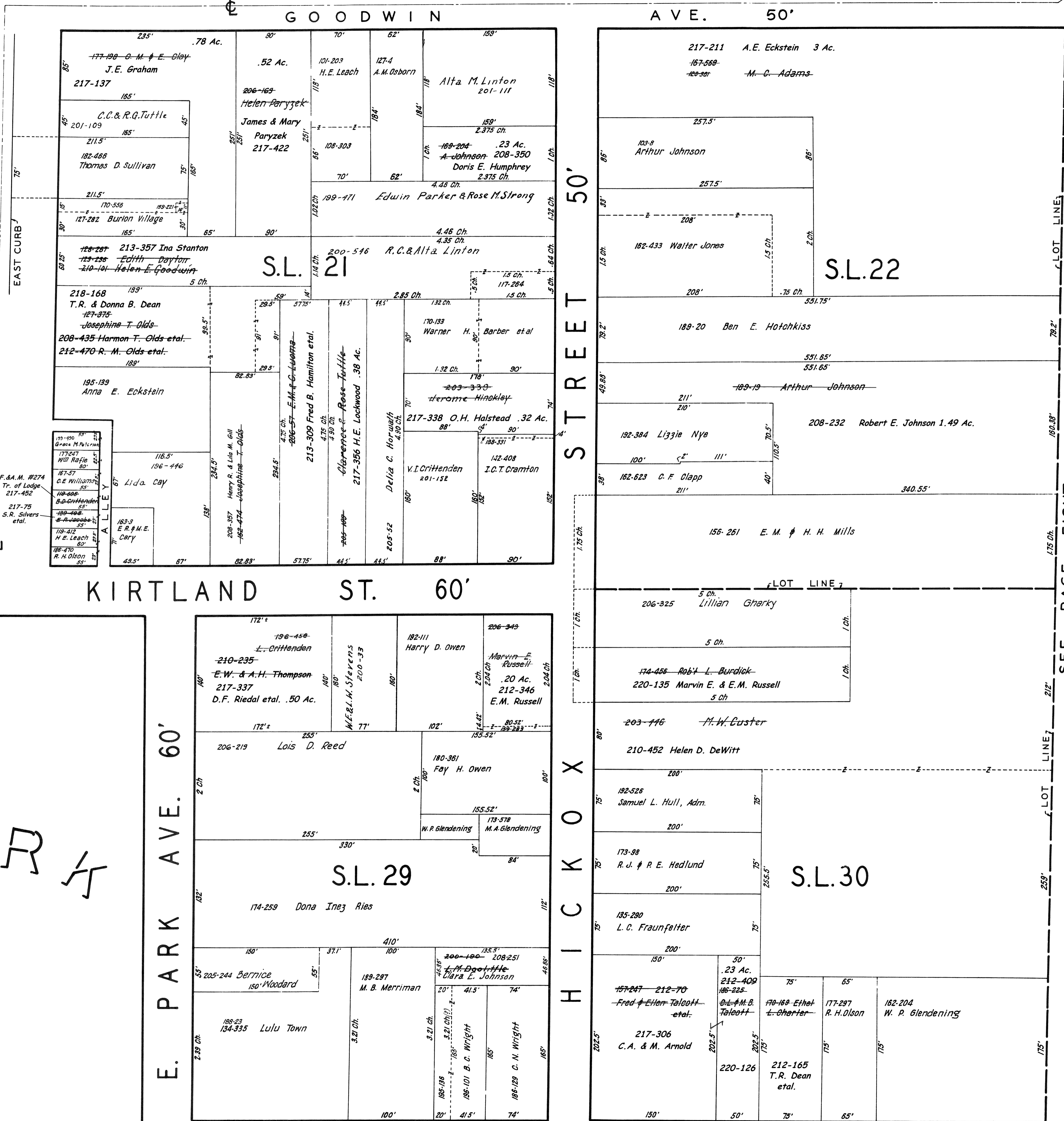


D A R K

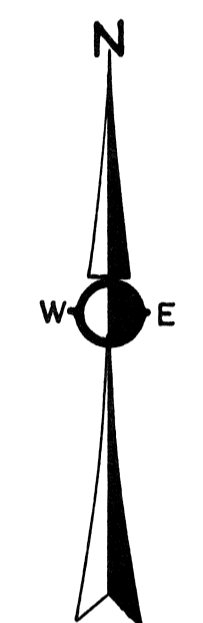


N. CHESHIRE ST. 132'

SEE PAGE SIX



SEE PAGE EIGHT



SCALE 1"=66'

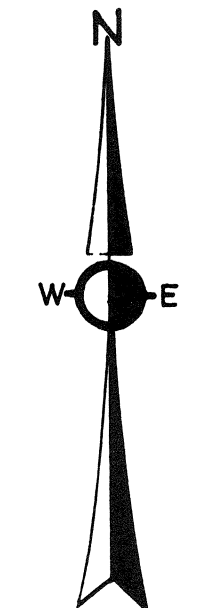
8-8-42  
JAN. 1, 1941  
3-1-43  
2-15-44

**BURTON  
VIL - 7  
NOT TO SCALE  
1944**

Handwritten scribbles and marks on the left side of the page.

BURTON VILL.-GREAT LOT 36

SEE PAGE FOUR



SCALE 1"=66'

8-8-42  
 JAN. 1, 1941  
 3-1-43  
 2-15-44

**BURTON  
 VIL - 8  
 NOT TO SCALE  
 1944**

E. CENTER ST.

SEE PAGE TWELVE

66'

PRESENT CENTER LINE

BURTON VILL.-GREAT LOT 45

SEE PAGE FIVE

W. CENTER ST. 66'

CORPORATION LINE

50'

WEST STREET

CORPORATION LINE

210-538 State Of Ohio 5 Ac.  
 S.L. 33

167-253  
173-262 Alex & Jennie Titterington 29.66 Ac. (New Survey)  
 213-150 L. & M. V. Kish 24.66 Ac.  
 S.L. 34

180-642 Louis & Goldie Bukovics 8 Ac.  
 S.L. 41

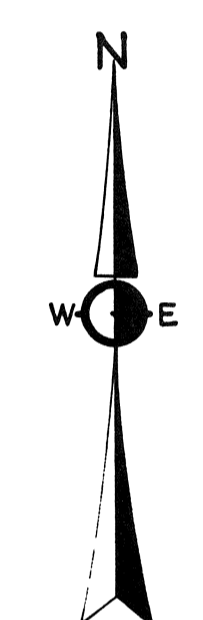
205-631 Harry C. Schneider  
 195-524  
196-217 Henry & Carl Schneider 3.65 Ac.  
 2 Ac.  
 1 Ac.  
 S.L. 42

2 Ch.  
 177-289 208-236  
 Eric Strom  
 Joseph & Anna Niell  
 212-317  
 W.F. & I.B.  
 Sanefsky  
 .51 Ac.  
 2.50 Ch.  
 2.50 Ch.

CARLTON ST. 50'

SEE PAGE THIRTEEN

SEE PAGE TEN



SCALE 1"=66'

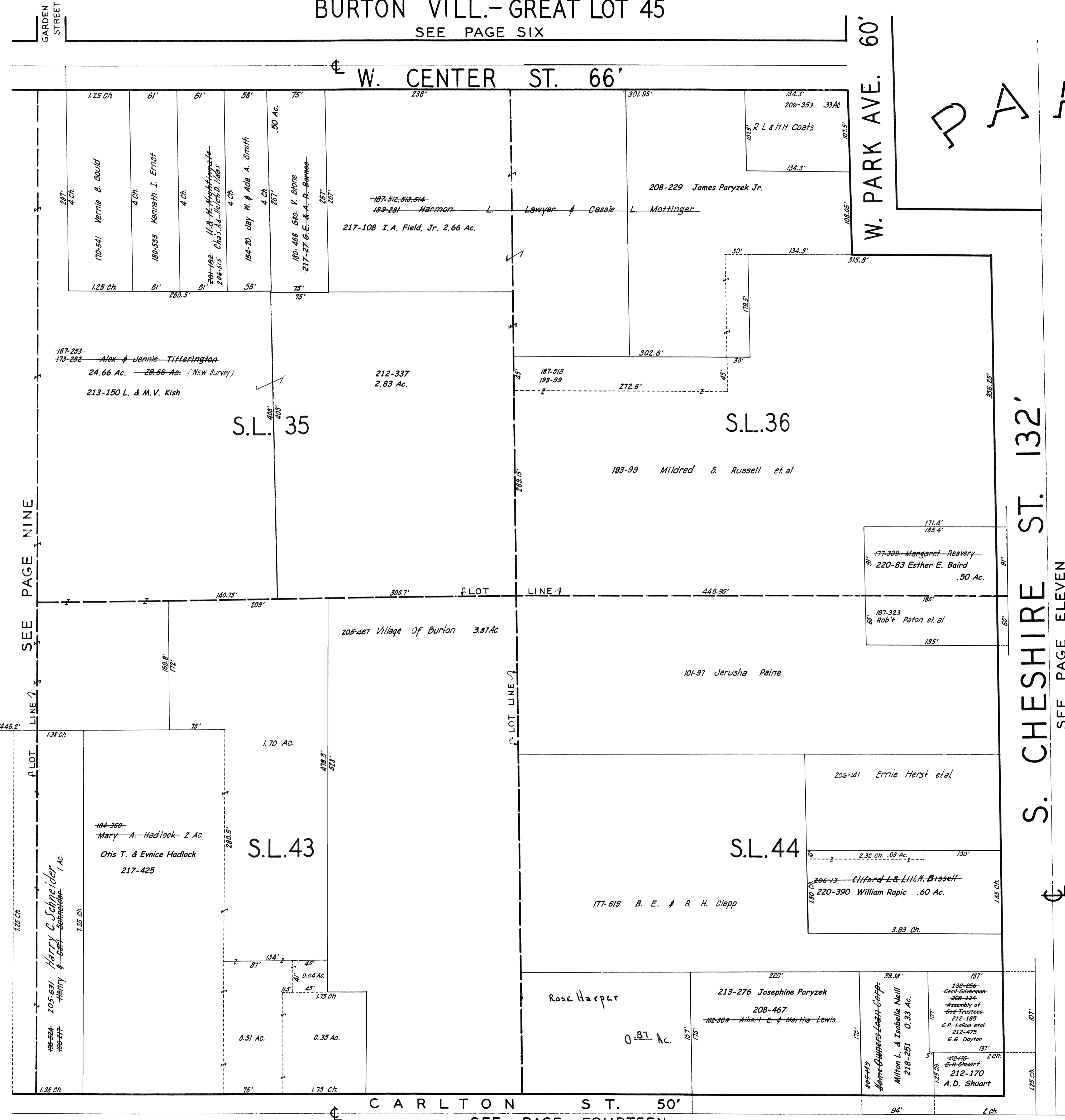
8-8-42  
JAN. 1, 1941  
3-1-43  
2-15-44

**BURTON  
VIL - 9  
NOT TO SCALE  
1944**

BURTON VILL.- GREAT LOT 45

SEE PAGE SIX

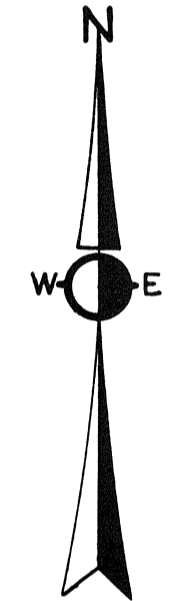
D A R S



SEE PAGE NINE

S. CHESHIRE ST. 132'

SEE PAGE ELEVEN



SCALE 1"=66'

8-8-42  
JAN 1, 1941  
3-1-43  
2-15-44

**BURTON  
VIL - 10  
NOT TO SCALE  
1944**

CARLTON ST. 50'

SEE PAGE FOURTEEN

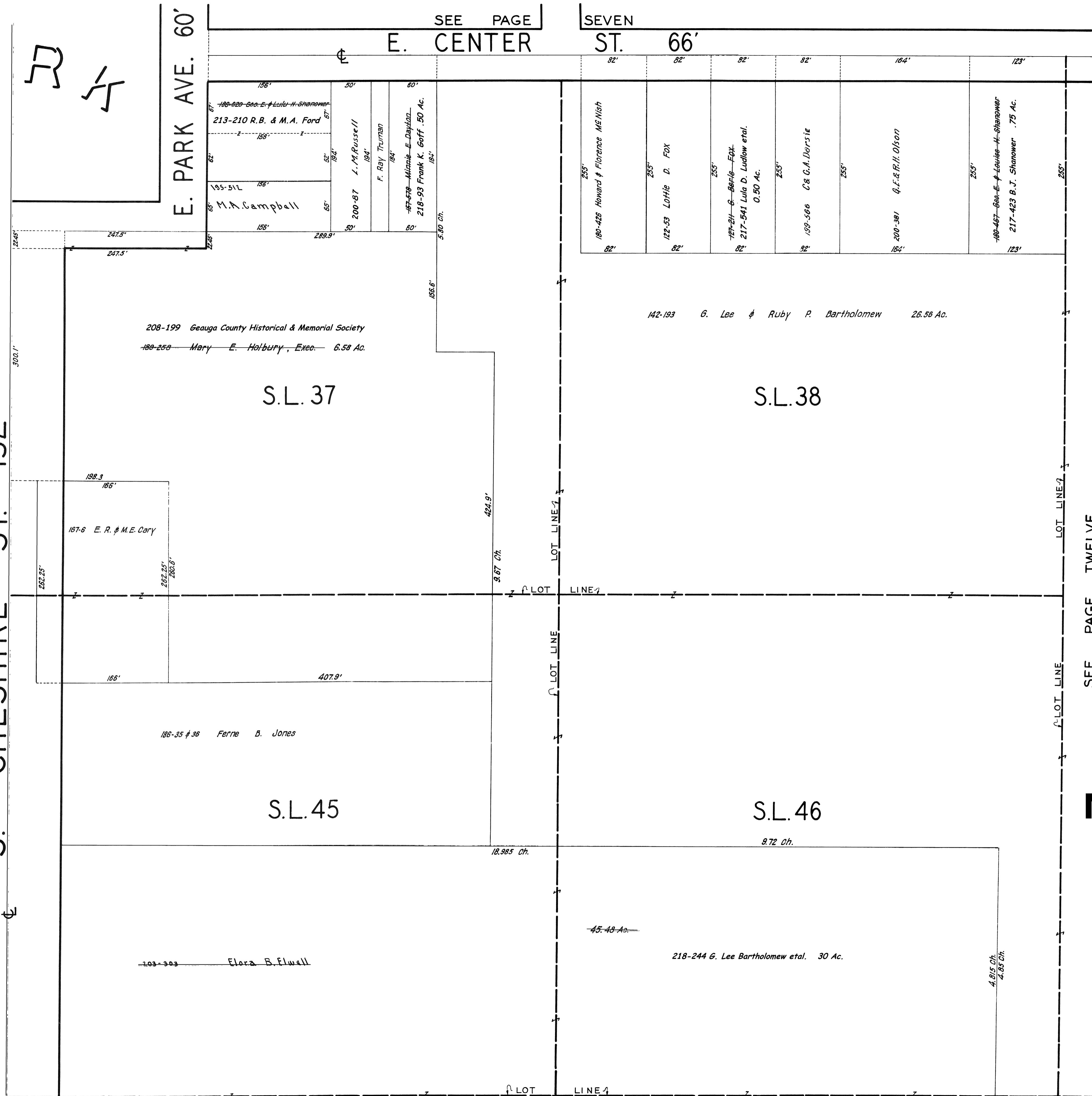
BURTON VILL.-GREAT LOT 46

D  
A  
R  
K

SEE PAGE SEVEN  
E. CENTER ST. 66'

E. PARK AVE. 60'

SEE PAGE TEN  
S. CHESHIRE ST. 132'



SCALE 1"=66'

8-8-42  
JAN. 1, 1941  
3-1-43  
2-15-44

**BURTON  
VIL - 11  
NOT TO SCALE  
1944**

SEE PAGE EIGHT

E. CENTER ST. 66'

142-193 G. Lee & Ruby P. Bartholomew  
26.56 Ac.

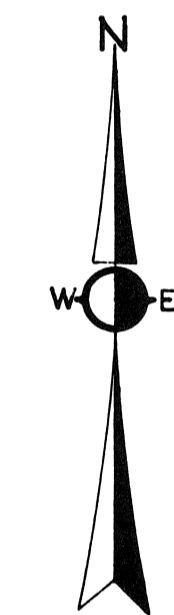
S.L. 39

218-118 R.C. & Alta M. Linton  
185-498 H. J. Russell  
16.87 Ac.

169-303 Frank J. Bohn 13.50 Ac.

S.L. 40

SEE PAGE ELEVEN



SCALE 1"=66'

8-8-42  
JAN. 1, 1941  
3-1-43  
2-15-44

S.L. 47

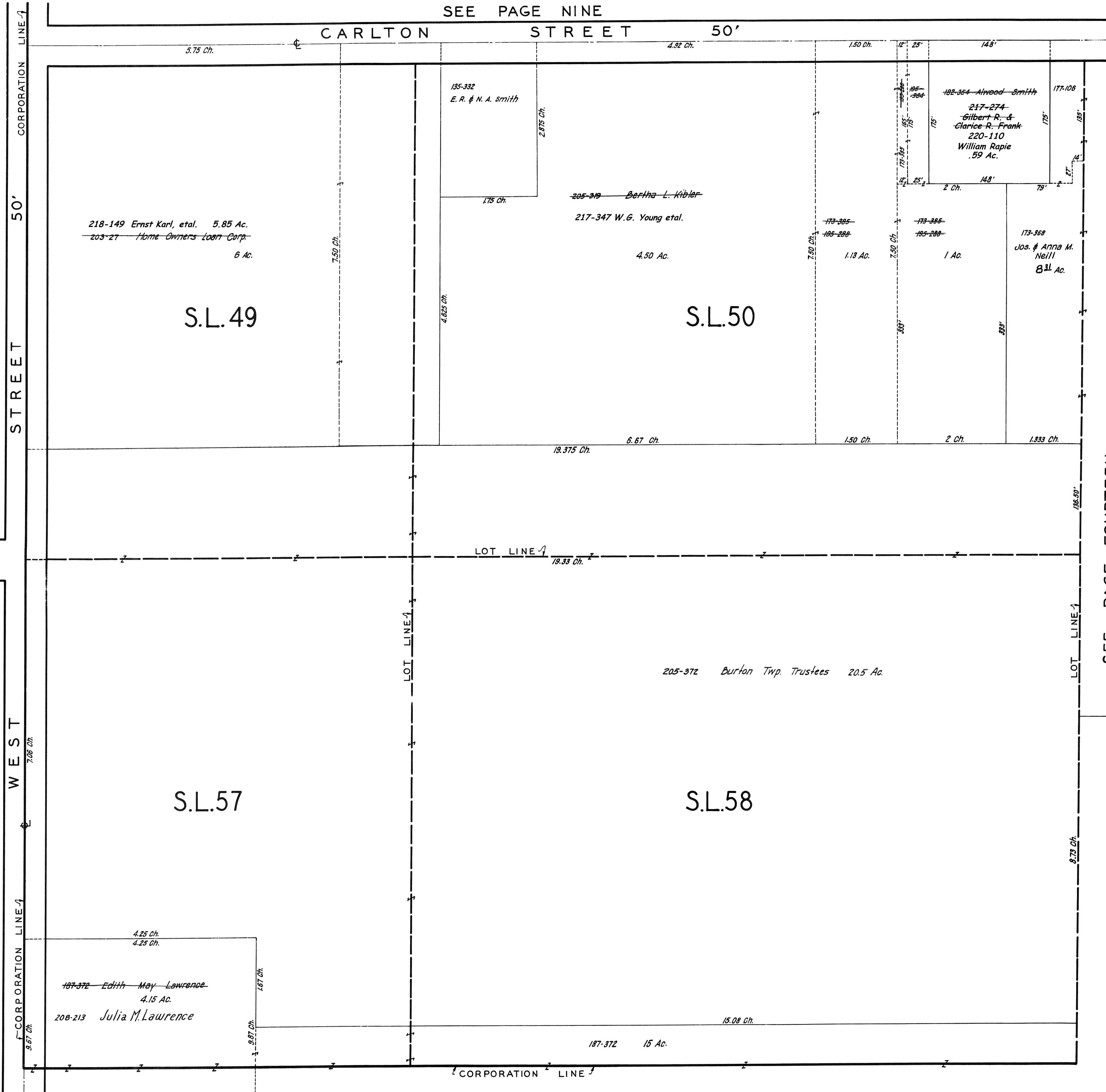
S.L. 48

**BURTON  
VIL - 12  
NOT TO SCALE  
1944**

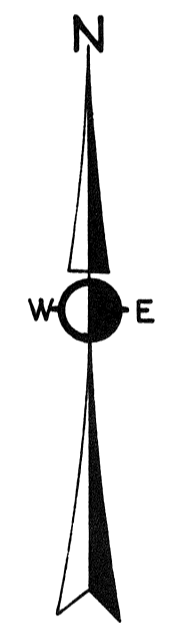
SEE PAGE SIXTEEN

SEE PAGE NINE

CARLTON STREET 50'



SEE PAGE FOURTEEN



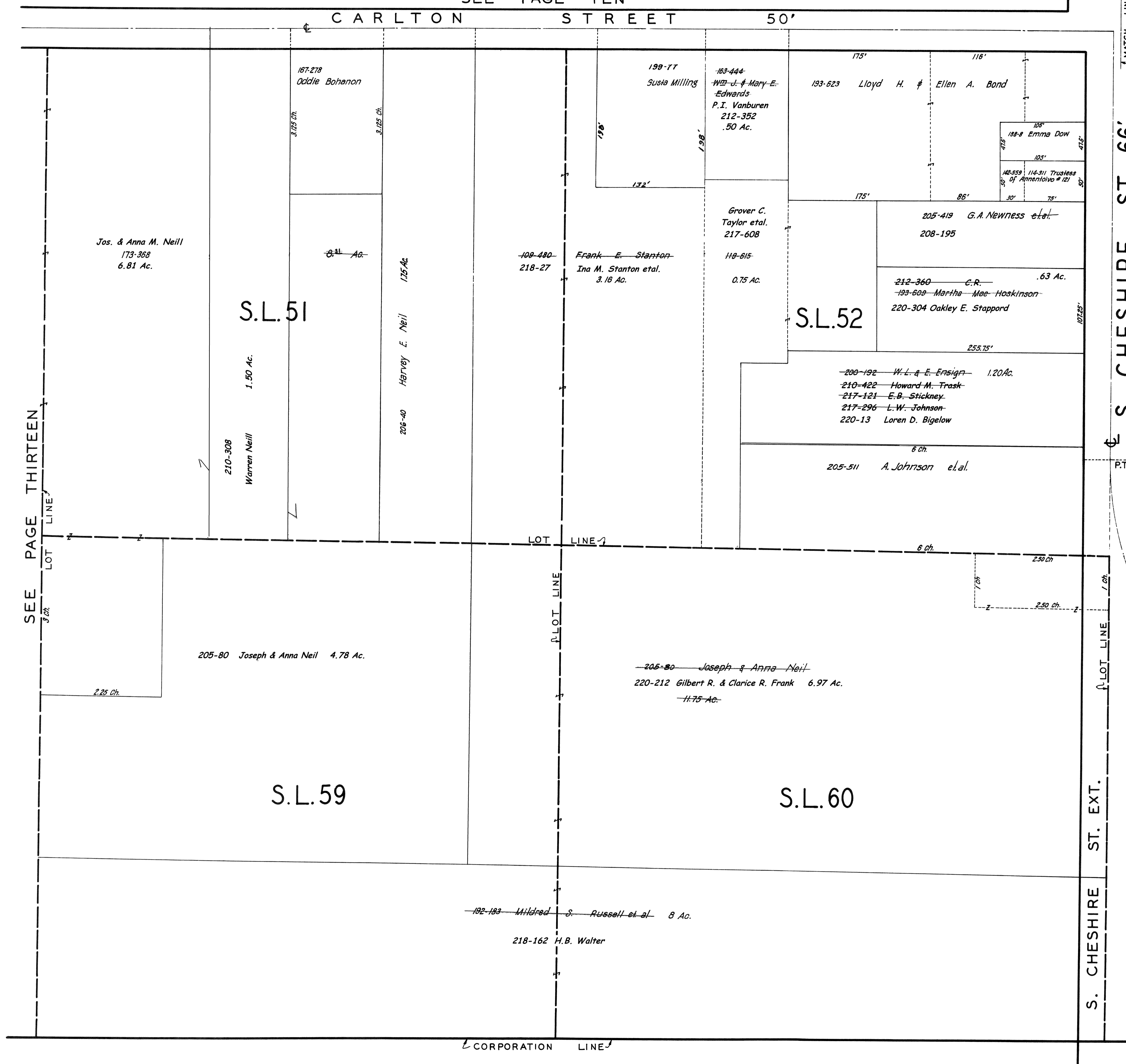
SCALE 1"=66'

8-8-42  
 JAN. 1, 1944  
 3-1-43  
 2-15-44

**BURTON  
 VIL - 13  
 NOT TO SCALE  
 1944**

BURTON VILL.-GREAT LOT 45

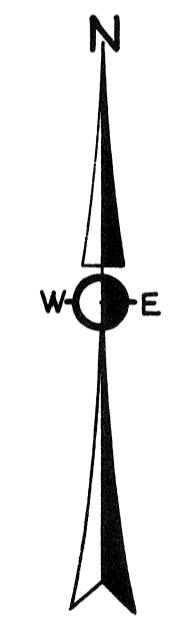
SEE PAGE TEN



SEE PAGE THIRTEEN

S. CHESHIRE ST. 66'

SEE PAGE FIFTEEN



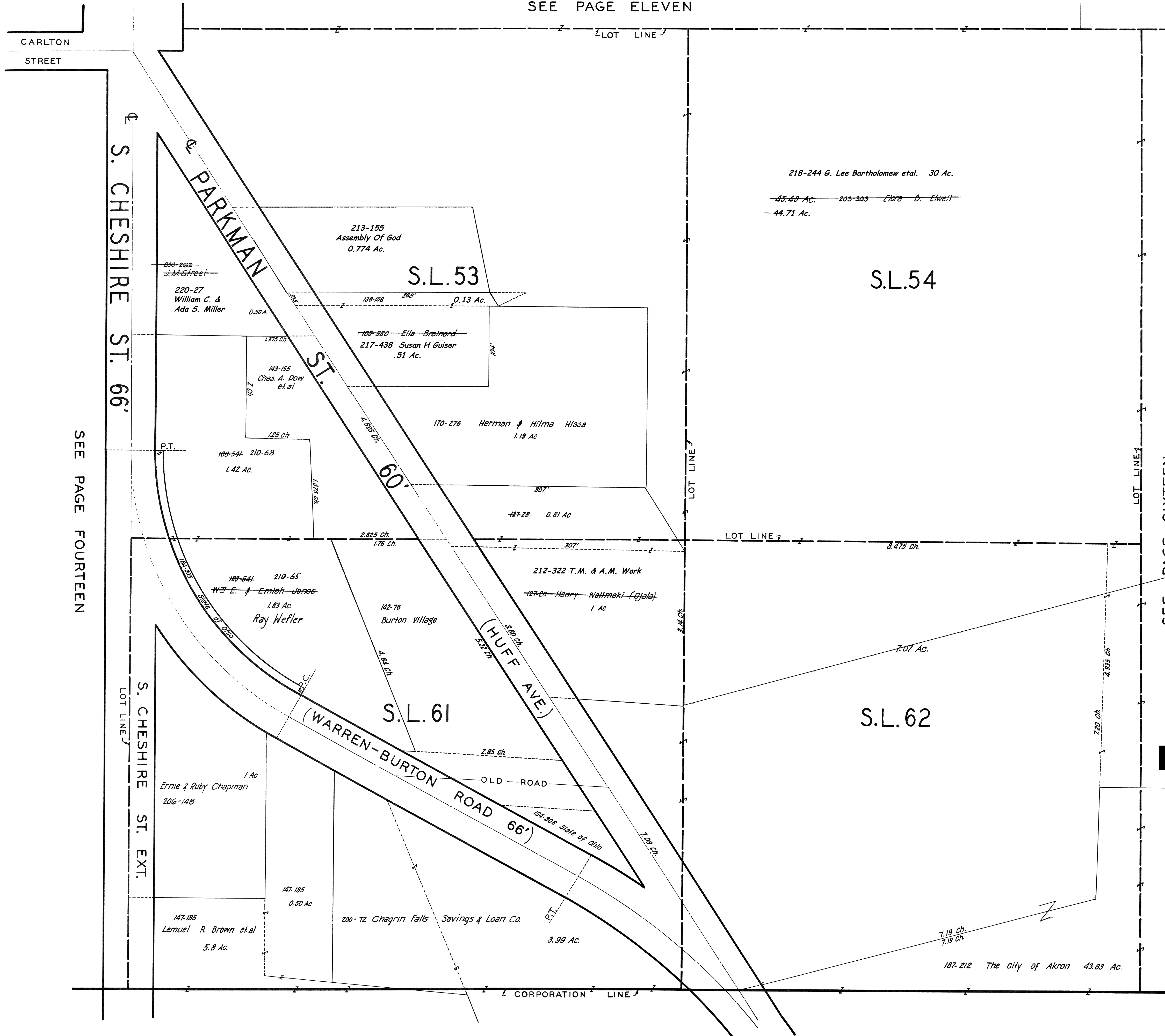
SCALE 1"=66'

8-8-42  
 JAN. 1, 1941  
 3-1-43  
 2-15-44

**BURTON  
 VIL - 14  
 NOT TO SCALE  
 1944**

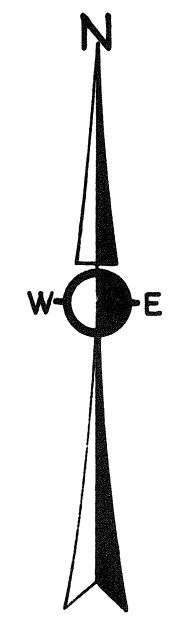


SEE PAGE ELEVEN



SEE PAGE FOURTEEN

SEE PAGE SIXTEEN



SCALE 1"=66'

~~8-8-42~~  
~~JAN. 1, 1941~~  
~~3-1-43~~  
 2-15-44

**BURTON  
 VIL - 15  
 NOT TO SCALE  
 1944**

